

# CASE STUDY

## Slope Analysis



### Problem

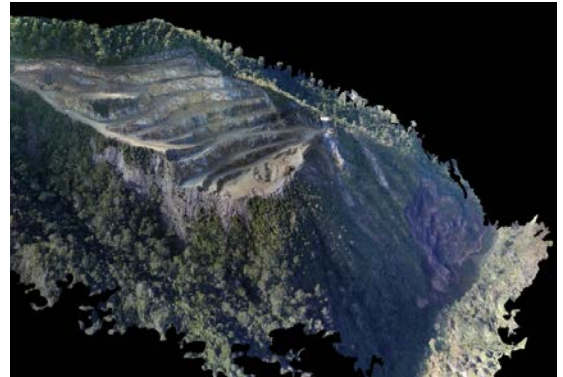
Steep slopes are hazardous at the best of times. Mines and quarries often need their slopes mapped and analysed to ensure they either remain or are made safe.

Ideally the mapping has to be non-disruptive, safe and quick.



### Approach

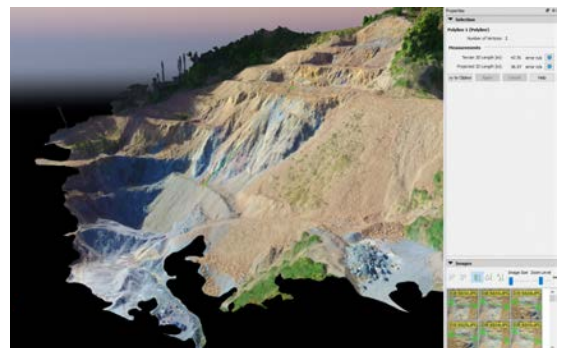
1. DroneMate has been hired by several companies to provide highly accurate maps and associated images of quarries and mines.
2. Working with a surveyor and ground control points, stepped aerial grids were flown over several hours.
3. No personnel were either on or near the slope and so not at risk.
4. The resulting map was delivered within 48 hours to engineers who checked angles, stability and developed slope stabilisation plans (if remediation was necessary).



### Solution

Fast, accurate and sharable maps were delivered quickly to all parties concerned (owners, engineers, consultants, site managers) and actions taken.

In one case, the work won a national award for the consulting engineer who hired DroneMate.



DroneMate's aerial surveying and mapping of steep slopes is very low risk, far faster, much cheaper and often more insightful (i.e. more granular so you can see tiny details) than traditional surveying methods.

Talk to us about how we can help you understand your stockpiles and volumetric calculations more efficiently.

📍 25 McShane Road, RD1 Richmond, Nelson, 7081  
✉ sales@dronemate.co.nz

📞 0508 DRONES (376637)  
🌐 www.dronemate.co.nz

